

DUOPROX SADDLE MOUNT PROXIMITY SWITCH



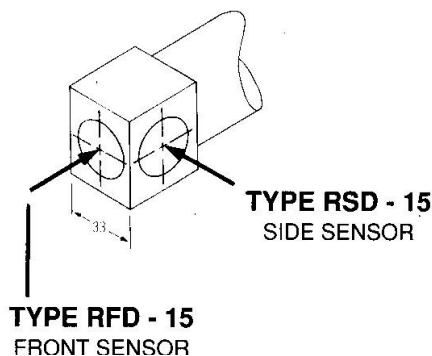
- ◆ One Piece Tough RYNITE glass filled polyester cased encapsulated Sensor watertight to IP67
- ◆ Both Front and Side Sensor Options with 360 ° rotation
- ◆ EURO-NORM mounting bracket breaks before the Sensor
- ◆ Two axis adjustment eliminates need for exact fixing
- ◆ Interchanges with equivalent Sensors and Limit Switches
- ◆ Watertight IP66 plug as standard with PG conduit fitting

The Duoprox Sensor is uniquely robust in that it is encapsulated in a tough RYNITE glass filled polyester housing. This makes it the toughest sensor on the market today.

Also it is flexible to install. Available with either front or side sensor face combined with its unique and versatile mounting bracket it is also the ideal sensor to replace heavy duty mechanical limit switches.

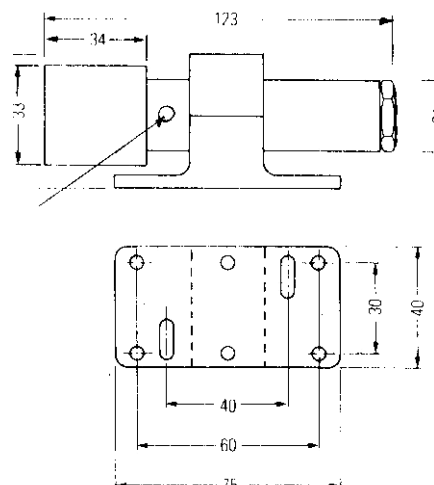
In addition, by incorporating the socket within the moulding, this sensor includes an IP66 plug connection with PG11 gland fitting for securing protective flexible conduit over the sensor cabling.

It is available for connection to 80-240 VAC supply with 2 wire thyristor output or 24 VDC supply with NPN or PNP transistor output. Both Normally Open or Normally closed output. Cable connection in standard form is Oilflex cable with high temperature silicon cable or armoured silicon cable in any length available as required.



OPTIONS AVAILABLE:

1. 100°C Service Temp.
2. Silicone or armoured cabling.
3. Cable lengths upto 20 metres.



BUILT TO LAST -

MODULOC® Tech-

A Rotalec Group company

Group Head Office
Quebec, Canada
E: Info@rotalec.com

Manufacturing & International Sales
Hertfordshire, England
E: sales@moduloc-intl.com

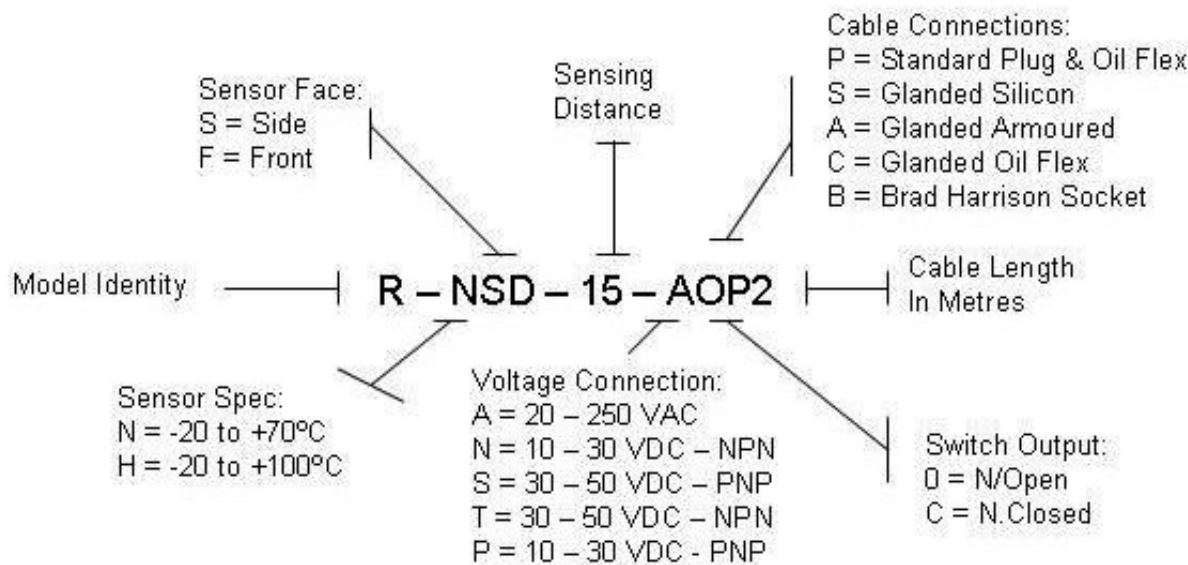
USA Office
Minneapolis MN55344
E: sales@moduloc-usa.com

T : 514-341-3685

T: +44 (0) 845-873-6501

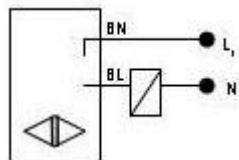
Tel: 952-238-8453

TYPE KEY ILLUSTRATION:



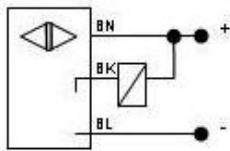
ELECTRICAL CONNECTION DATA:

TYPE AO/AC



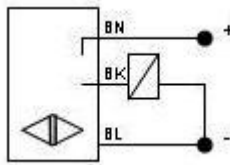
2 WIRE THYRISTOR

TYPE NO/AC



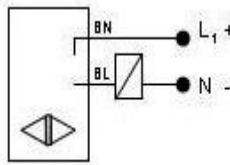
NPN CONNECTION

TYPE PO/PC



PNP CONNECTION

TYPE MO/MC



2 WIRE MOSFET

SPECIFICATIONS:

20 - 250 VAC	
Frequency	60 - 80 Hz
Nominal Range (46x46mm target)	20 mm non-flush
Switching Repeatability	2 %
Leakage Current	<2.5mA @ 220 V
Load Current ... min	6 mA
... max	400 mA
Voltage drop "on"	8 V @ 400 mA
Max. switching speed	3 A (20m s)
Hysteresis	15 % max
Ambient Temperature	-20°C to +70°C
Watertight protection	IP67

10 - 30 / 30 - 50 VDC	
Frequency	10 %
Nominal Range (46x46mm target)	20 mm non-flush
Switching Repeatability	2 %
No-load Current	< 3 mA @ 24 V
Residual Voltage	0.1 V
Voltage Drop (actuated)	< 2.6 V/400 mA
Hysteresis	15 % max
Max. output current	400 mA
Max. switching rate	100 Hz
Max. duty cycle	100 %
Ambient Temperature	-20°C to +70°C
Watertight protection	IP 67

20 - 250 VAC/VDC	
Frequency	46 - 66 Hz
Nominal Range (46x46mm target)	20 mm non-flush
Switching Repeatability	2 %
Leakage Current	2 mA
Load Current ... min	2 mA
... max	200 mA AC/DC
Permissible peak from mains	20 A spike 8/20 to VDC D432 Part 2
Voltage drop	14 V AC/DC (0.5 Hz) @ max load
Max. Switching Speed	26 Hz AC - 100 Hz DC
Ambient Temperature	-20°C to +70°C
Watertight Protection	IP 67

The information contained herein is to the best of our knowledge accurate. However, please ensure that this information has not been amended or superseded.

MODULOC[®] Technology - The Total Sensor Solution

MODULOC[®]
Controls Ltd

Your Local Sales Representative:

We reserve the right to alter specifications without prior notice. Specifications without tolerances are typical values.